

SONOMA



WIRE WORKS

RAW

RIFFWORKS

standard



RECORDING

MADE

FUN

Installation Manual

RiffWorks Standard

Chapter 1 System Requirements

Windows:

- * PIII 1GHz (P4 or equivalent 1.8GHz recommended)
- * ASIO driver capable audio interface
- * Win XP

MacOS:

- * G4 1.33GHz (Intel CoreDuo or G5 1.8GHz recommended)
- * Core Audio input device — some don't have one built-in eg. MacMini
- * Mac OS X 10.4 or later, including Universal

All:

- * 512MB of RAM (1GB recommended)
- * 1GB of disk space free for installation
- * 5 GB of disk space free for recording
- * Activation, RiffCaster & RiffLink require an internet connection
- * Appropriate beverage (Don't knock it over on the computer with your guitar!)

There is a Recommended Hardware List in the RiffWorks Online User Guide:
http://www.sonomawireworks.com/guide/index.php/Recommended_Hardware

Look for some of these recommended devices as we begin offering them in the Sonoma Wire Works Online Store:
<http://www.sonomawireworks.com/store>

RiffWorks Standard

Chapter 2 Installation

Windows

Insert the CD.

If the installer doesn't appear automatically (perhaps CD Auto-Run is disabled), please double click on the InstallRiffWorksStandard icon.

Please read the License Agreement. Click "I Agree" to continue.

You can select various components of RiffWorks to Install. If selected, InstantDrummer Sessions are automatically installed for you when you install RiffWorks Standard. Most users should install all the items. Click "Next" to continue.

Select a folder to install RiffWorks Standard. Most users should use the standard location. The default location is:

Program Files\Sonoma Wire Works\RiffWorks Standard\

Click "Install" to continue.

Click "Finished" to exit the Installer.

To launch RiffWorks Standard go to:

Start->Programs->Sonoma Wire Works->RiffWorks Standard

Drag the RiffWorks Manual and Demo Songs folder to your Desktop, Documents folder or other preferred location.

Uninstall

In the "Start" menu, select "Add or Remove Program". A list of the software installed on your system is displayed.

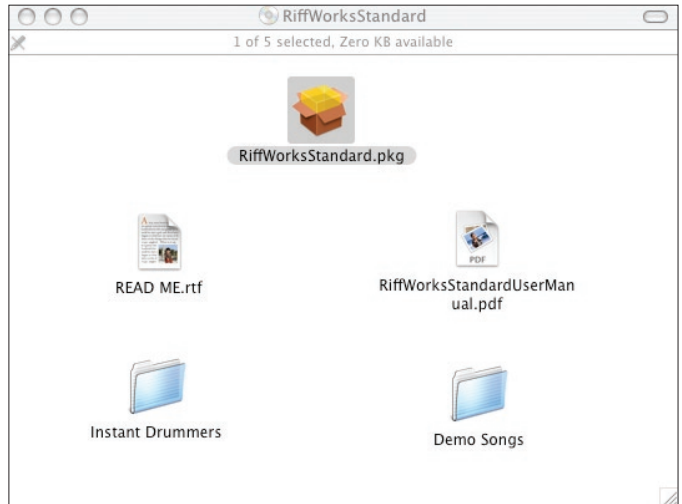
Select "RiffWorks Standard" and click the "Remove" button. All the RiffWorks Standard components will be removed from your system. Your RiffWorks Songs, mixed down files and InstantDrummer Sessions that you purchased separately will NOT be removed.

RiffWorks Standard

Macintosh

Insert the CD.

Double-click on the RiffWorksStandard package icon.



Follow the instructions.

RiffWorks Standard will be installed in the Applications folder. Instant-Drummer Sessions are automatically installed for you when you install RiffWorks Standard.

Drag the RiffWorks Manual and Demo Songs folder to your Desktop, Documents folder or other preferred location.

Uninstall

Open the Applications folder and drag RiffWorks Standard to the trash.

RiffWorks Standard

Chapter 3 Registration and Activation

Registering RiffWorks Standard by creating your SonomaKey gives you access to RiffCaster online broadcasting, starts your RiffLink collaboration 60-day free trial and allows purchasing additional InstantDrummer sessions from the Sonoma Wire Works online store. The same user name and password are also used in our online Forum community. It is your "key" to all of the Sonoma Wire Works services.

When RiffWorks Standard is launched you will be asked to activate using a SonomaKey username, password, and the serial number that is included on the registration card in the box with RiffWorks Standard.

The screenshot shows the 'Activate' page for RiffWorks Standard. On the left, there is a dark blue registration form with the following elements:

- A key icon with the text 'SONOMAKEY' above it.
- Input fields for 'Username:', 'Password:', and 'Serial:'.
- Two buttons: 'ACTIVATE' and 'ACTIVATE LATER'.
- A link for 'Forgot Password?'.

On the right side of the page, there is an 'About' section with the following text:

About
To Activate RiffWorks you need to Register. Registering enables several cool features like RiffCast, RiffLink collaboration, and purchasing more Instant Drummers. You can use RiffWorks without Registering and Activating for up to 30 days. When 30 days is up, RiffWorks will no longer run. You have 30 days left to activate.

Below the 'About' text is a 'REGISTER' button and the RiffWorks logo, which consists of the letters 'R' and 'W' in a stylized font, with 'RIFFWORKS' written below.

To create your SonomaKey username and password, just click the registration button and fill-out the online form.

Once you have registered just enter your SonomaKey username, password and your serial number in the boxes and press "Activate". The serial number is always 8 characters, ALL CAPS, no numbers.

If you just want to start recording, you can click "Activate Later". You have 30 days to use RiffWorks Standard without activating. After that, RiffWorks won't run until you complete the registration and activate.

You can activate RiffWorks Standard on up to 3 machines. If you need to exceed this limit, please contact technical support.

If you need to activate a machine that is not connected to the internet, you will still need an internet connection on another computer. Please contact technical support for more information on this procedure.

RiffWorks Standard

Chapter 4 More Information

FORUMS

Search the Forums and ask enthusiastic RiffWorks users from all over the world. Chances are someone there has already asked the same questions you have, knows the answer to your problem, and will gladly give you the tips you need any hour of the day. Sonoma Wire Works support staff monitors the forums daily and answers questions as well, but because we're only in one time zone, the users usually beat us to it! <http://www.sonomawireworks.com/forums/>

GUIDE, FAQ & PDF MANUAL

Check the searchable, online RiffWorks User Guide where every feature of RiffWorks is documented including many tips and tricks. You'll also find the answers to Frequently Asked Questions About RiffWorks in the Guide. Plus there is a link to download our printable RiffWorks User Manual in PDF format. This is the same Manual that is included on this CD. <http://www.sonomawireworks.com/guide/>

NEWSLETTER

This monthly publication includes announcements about Sonoma Wire Works products, services, events and contests. It contains featured columns about the music industry and helpful tips for using our products. <http://www.sonomawireworks.com/newsletter.php>

SUPPORT

Contact our support team directly. We use a web-form to keep support requests organized and to be sure that no one goes unanswered. Please be sure to fill out the form completely so that we can help you as quickly as possible. http://www.sonomawireworks.com/support_form.php

www.sonomawireworks.com
Sonoma Wire Works
101 First Street, Suite 587
Los Altos, CA 94022

©2007 Sonoma Wire Works. All rights reserved.

RiffWorks, InstantDrummer, RiffCaster, RiffLink and Sonoma Wire Works are trademarks of Sonoma Wire Works. ReWire and REX2 are technologies licensed from Propellerhead Software.

VST is a trademark of Steinberg Media Technologies GmbH.
All other trademarks are property of their respective owners.

